

TransAlta Corporation

Riplinger Wind LP Transmission Line Project

Stage 1: June 2023

What is the Riplinger Wind LP Transmission Line Project?

TransAlta Corporation (TransAlta) is proposing to build a 240 kilovolt (kV) transmission line from the proposed TransAlta Riplinger Wind Power Project to a connection point located in the Municipal District of Pincher Creek (the "Project"). The transmission line will be about 45 km long and become part of the Alberta Integrated Electrical System (AIES).

Who is TransAlta?

Headquartered in Calgary, TransAlta owns, operates and develops a diverse fleet of electrical generation assets in Canada, the United States and Australia. We've been committed to providing clean, low-cost and sustainable electricity to power local communities for over a century. We are a publicly traded company on the Toronto Stock Exchange.

We believe it is important for local communities to benefit from our projects and operations and welcome all suggestions on how we can contribute to and support the community.

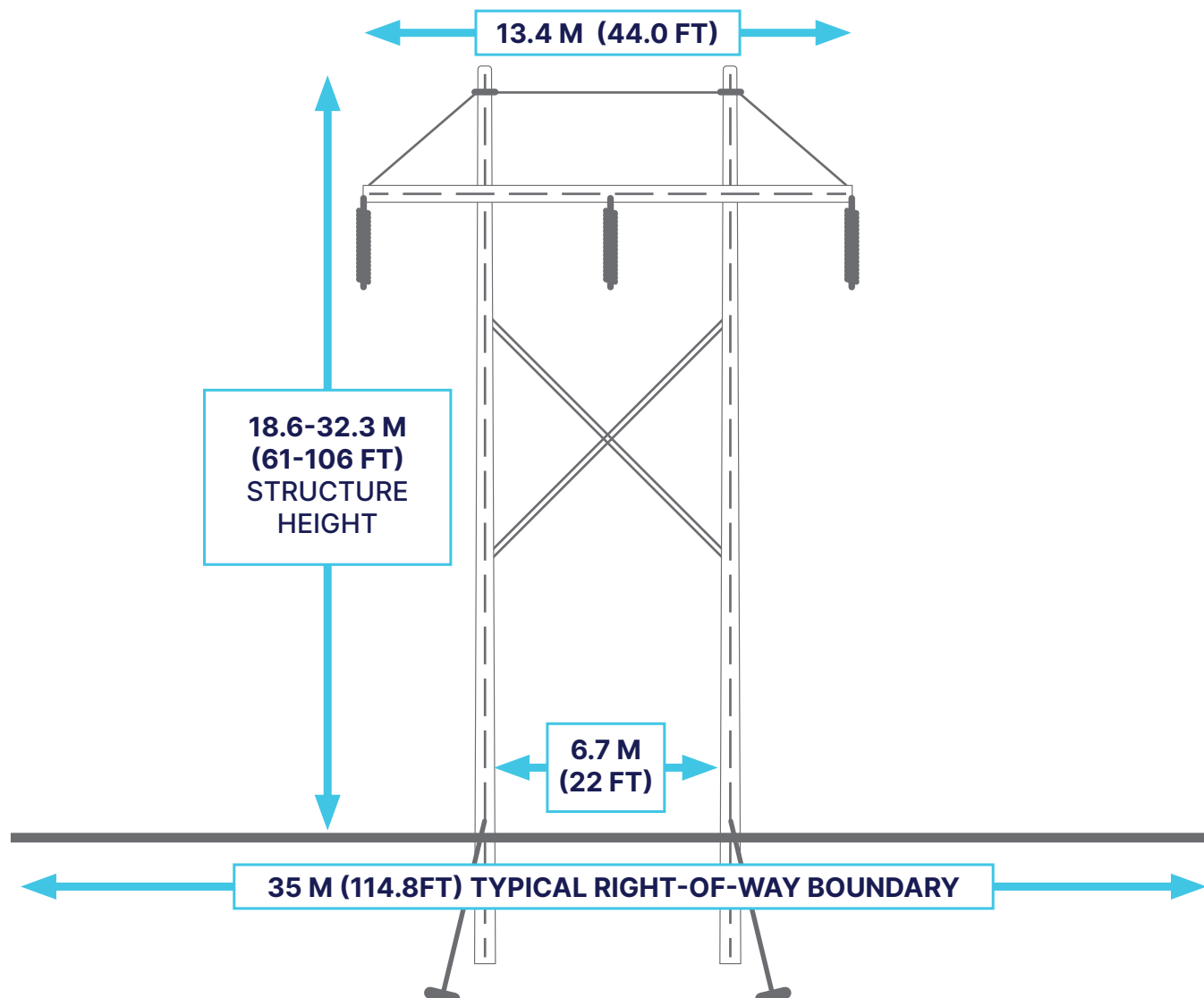
What will the Project include?

- + Overhead transmission wires
- + Transmission structures
- + Telecommunication wires
- + Permanent easements
- + Temporary workspace
- + Access roads
- + Laydown areas

What will the Project look like?

Final structure types have not been determined and will be shared with the community once finalized. Structure placement will be based on engineering constraints and conversations with community members.

The Project will primarily consist of "H-Frame" structures, similar to the diagram. Most of the structures will be spaced approximately 200 m (656 ft) apart. Other structures will be required at highway crossings, river or creek crossings, longer spans, corners, and switching structures at the connection point. Switching structures are used to isolate transmission lines to do maintenance, or in the event of an emergency.



What is the route selection process?

The route selection process considers a number of factors to try to find the route with the lowest overall perceived impact. This includes understanding potential impacts or features that may be unique to the Project area.

By going through this route selection process, we will identify preferred and alternate route(s) for the Project. Your feedback will be considered and included in our Project application to the Alberta Utilities Commission (AUC). The AUC considers public feedback in their review and approvals process.

Factors that are considered when selecting the potential route for a transmission line:



Once preferred and alternate route(s) are selected, they will be presented to the public for further commentary. Following review, feedback will be considered and presented to the Alberta Utilities Commission (AUC) in a facility application for their review and approval.

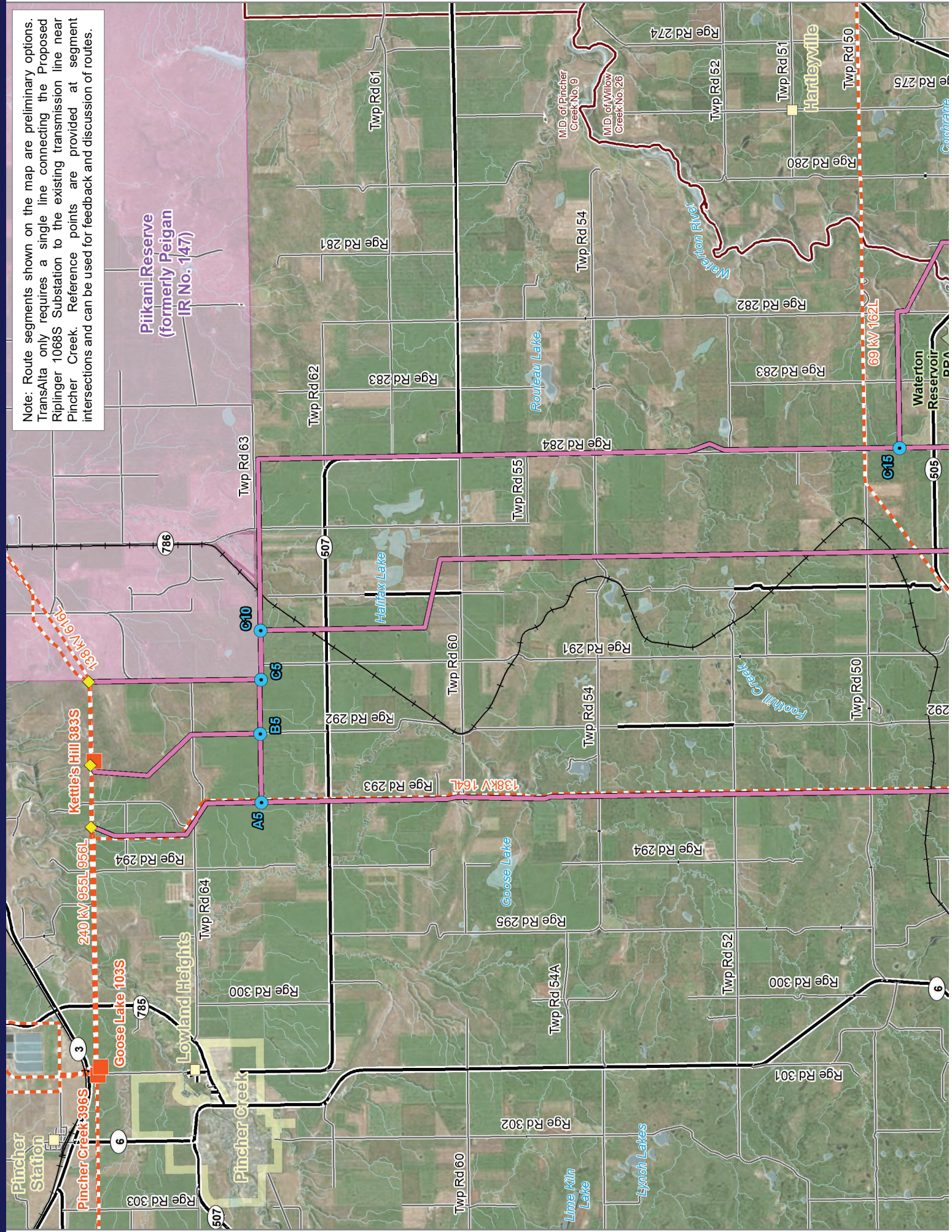
Where will this Project be located?

The proposed transmission line will connect the proposed Riplinger 1086S substation which is part of TransAlta's Riplinger Wind Power Project northwest of Cardston to the existing 240 kV transmission line (956L) in the Municipal District of Pincher Creek. The project will be located on private land. This Project is required to connect the TransAlta Riplinger Wind Power Project to the AIES.

Has the final route been selected?

No. We are still in the early stages of designing the Project and are looking at different options before making any decisions.

Note: Route segments shown on the map are preliminary options. TransAlta only requires a single line connecting the Proposed Riplinger 1068S Substation to the existing transmission line near Pincher Creek. Reference points are provided at segment intersections and can be used for feedback and discussion of routes.



Piikani Reserve
(formerly Peigan
IR No. 147)

Hartleyville

Waterton
Reservoir

Pincher
Station

Pincher Creek

Lowland Heights

Pincher Creek

Lowland Heights

Halifax Lake

Goose Lake

Lime Kiln
Lake

Lynch Lakes

Foothill Creek

Rouleau Lake

Waterton River

M.D. of Pincher
Creek No. 9

M.D. of Willow
Creek No. 26

Kettle's Hill 383S

240 kV 955L 956L

Goose Lake 103S

Pincher Creek 396S

138 kV 616L

138 kV 164L

69 kV 162L

A5

B5

C5

C10

C15

786

507

507

505

505

505

505

505

505

505

505

505

505

505

505

505

505

3

6

507

507

507

507

507

507

507

507

507

507

507

507

507

507

507

3

6

507

507

507

507

507

507

507

507

507

507

507

507

507

507

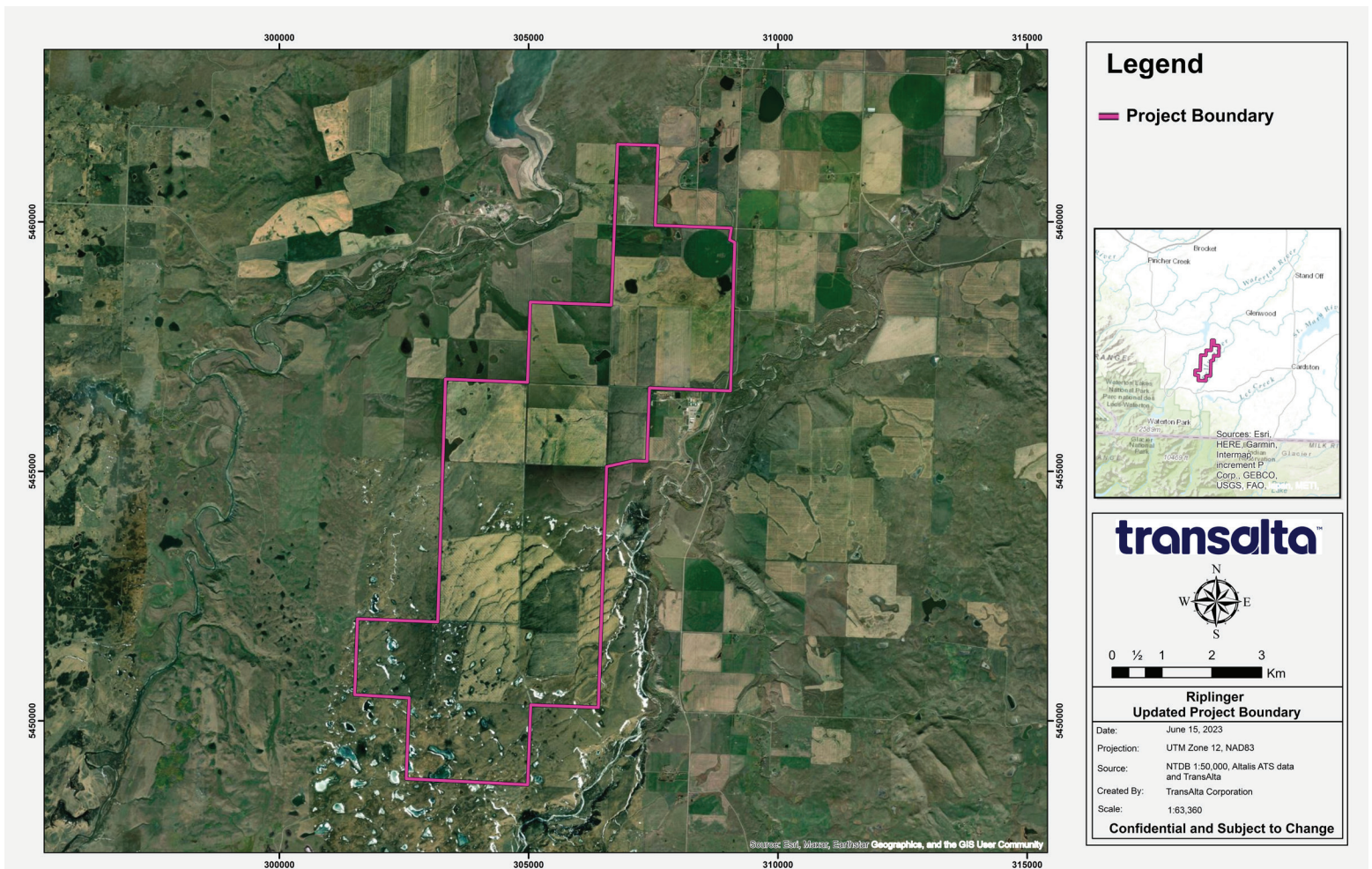
507

What is the Riplinger Wind Power Project?

The Riplinger Wind Power Project is a proposed 300 megawatt wind development located approximately 30 km southeast of Pincher Creek on approximately 14,000 acres of privately-owned land in Cardston County.

We expect this Project to have 47 turbines all on private land.

For more information Power Project please visit:
transalta.com/about-us/our-operations/projects-in-development/riplinger/



Are there other groups involved with the Project?

Yes, this Project is eligible to be developed and constructed under the Market Participant Choice (MPC) option; this means the Project will be permitted and constructed by TransAlta. Once the line is in-service, TransAlta will transfer the Project to AltaLink who will assume role of Transmission Facility Owner (TFO) and operator of the transmission line.

Who is the Alberta Utilities Commission?

The Alberta Utilities Commission (AUC) is an independent, quasi-judicial agency of the province of Alberta. The AUC is responsible to ensure that the delivery of Alberta's utility service takes place in a manner that is fair, responsible and in the public interest.

The AUC will make the final decision on this Project. TransAlta will submit preferred and alternate(s) routes to the AUC in a facility application in Fall of 2023.

Further information on the AUC, its review process and how to get involved can be found on the AUC's website at <https://www.auc.ab.ca/>.

Who is the Alberta Electric System Operator?

The Alberta Electric System Operator (AESO) is an independent, not-for-profit organization responsible for the safe, reliable, and economic planning and operation of the provincial transmission grid. For more information about why this project is needed, please refer to the AESO's Need Overview included with this package or visit www.aeso.ca. If you have any questions or concerns about the need for this project or the proposed transmission development to meet the need, you may contact the AESO directly. You can make your questions or concerns known to a transmission facility owner representative who will collect your personal information for the purpose of addressing your questions and/or concerns to the AESO. This process may include disclosure of your personal information to the AESO.

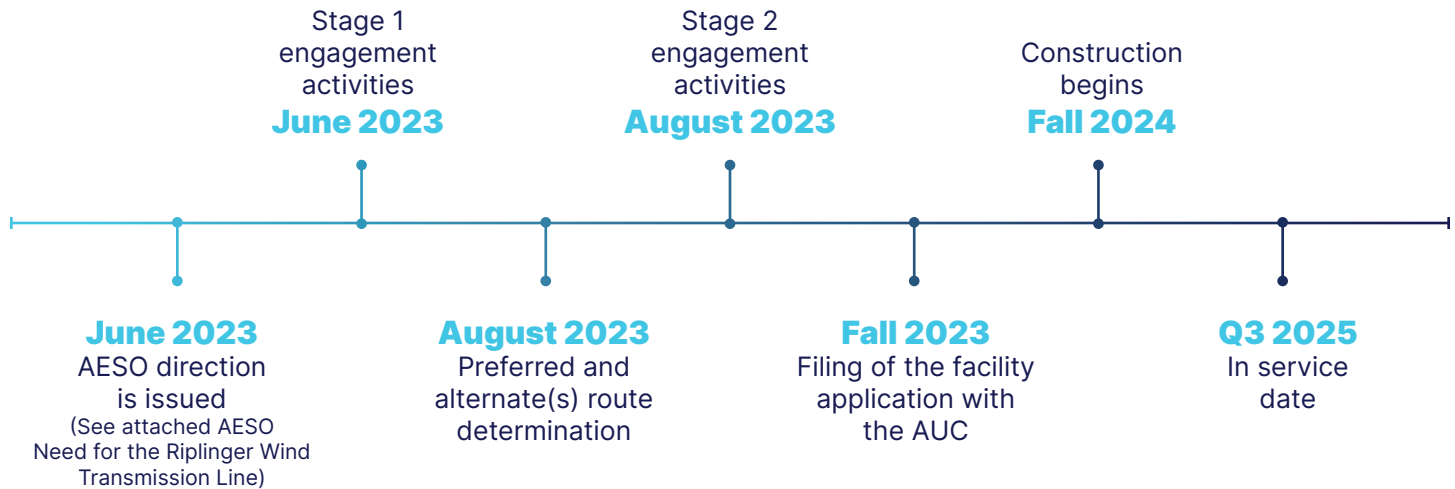
+ 1-888-866-2959

+ stakeholder.relations@aeso.ca

+ www.aeso.ca



What is the Project timeline?*



*Subject to change

Questions or Comments?

We welcome and appreciate your feedback on the Project. We use feedback from interested parties in designing our projects so that we can seek to mitigate potential impacts.

- + Phone: 1-888-893-4980
- + Email: riplingertransmission@maskwaenv.com
- + Website: transalta.com/about-us/our-operations/projects-in-development/riplinger/

